

PUBLIC SUMMARY REPORT
TRACEABILITY TO PLANTATION ASSESSMENT

Name of Parent Company: Prosper Group of Companies

Name of Palm Oil Mill: Kosfarm Palm Oil Mill Sdn. Bhd.

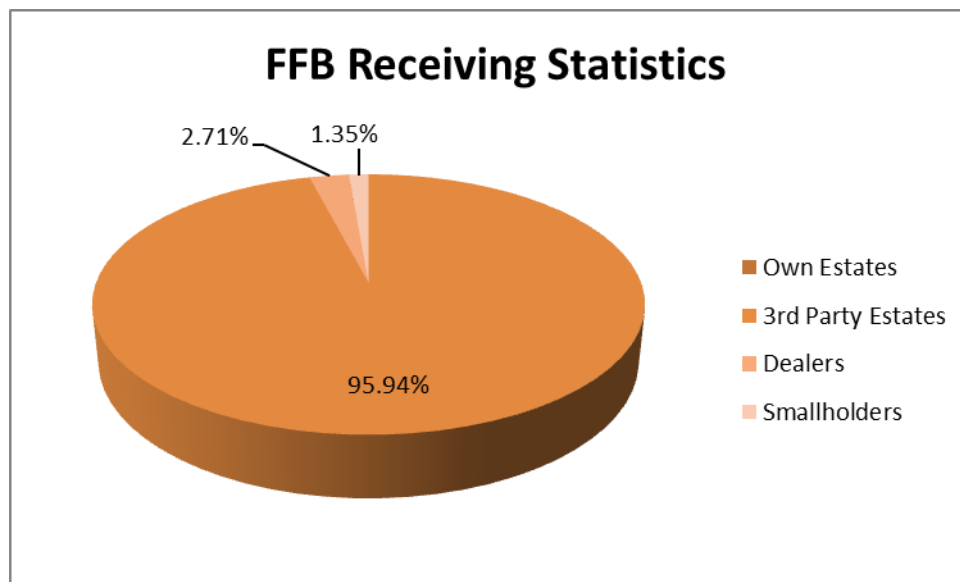
Mill MPOB License No.: 500119904000

Mill Address: Lot PT 256, Mukim Keratong, Rompin, Pahang

GPS Coordinate of Palm Oil Mill: 2.99442, 102.82053

Supplied Mewah's Refineries: Mewah-Oils Sdn Bhd (Port Klang) & Mewaholeo Industries Sdn Bhd (Pasir Gudang)

Assessment Date: 15th May 2018 (Tuesday)

A. Fresh Fruit Bunch (FFB) Traceability:


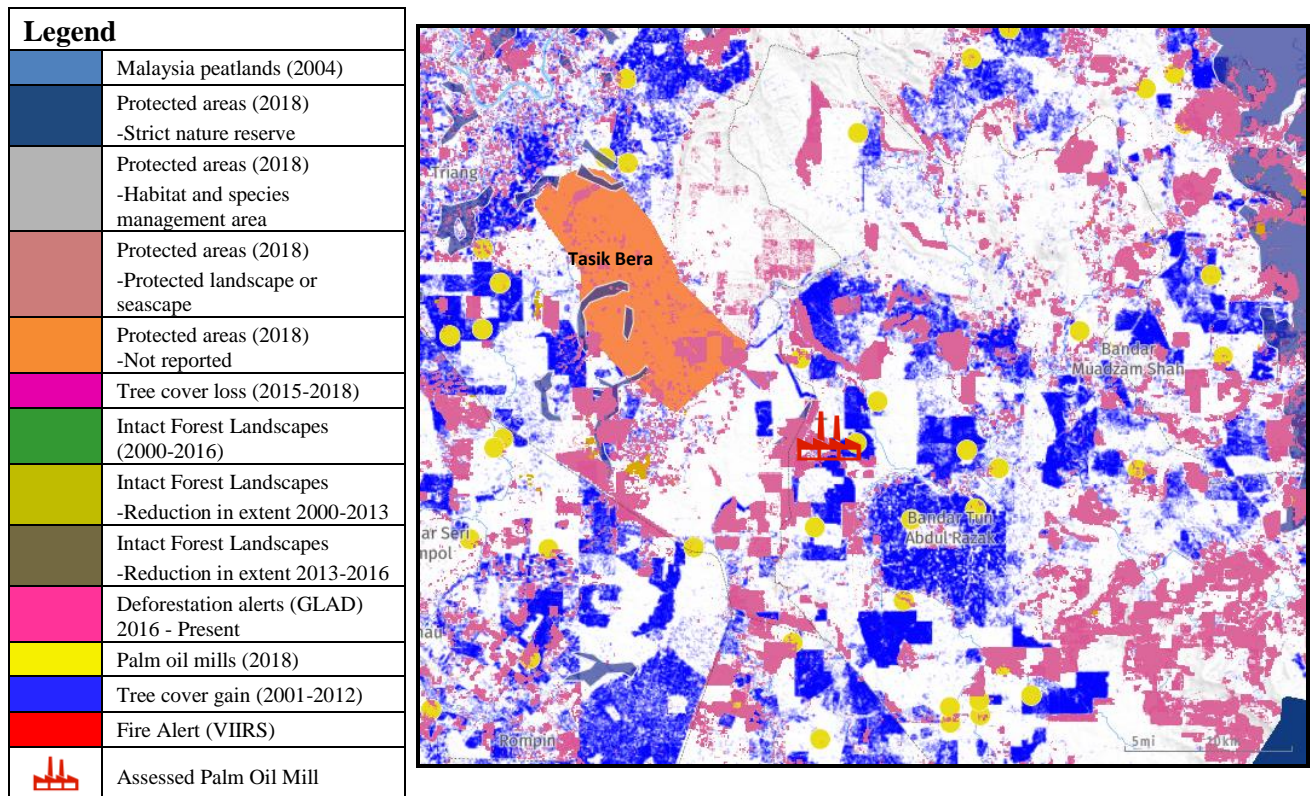
FFB Sources	Traceability Score	Overall TTP Score %
Own Plantations/ Estates	Not Applicable	100%
3 rd Party Plantations/ Estates	100%	
Dealers	100%	
Smallholders	100%	

B. Environmental Risk Analysis

1. Environmental risk assessment is carried out within the theoretical FFB catchment area (50 km radius) in Kosfarm Palm Oil Mill Sdn. Bhd. using Global Forest Watch (GFW) tool.
2. The overall environmental risk ranking of Kosfarm Palm Oil Mill Sdn. Bhd. is summarized as follows.

Potential Environmental Risks						
Rate of Tree Cover Loss	Tree Cover Loss on Primary Forest	Potential Future Loss in Primary Forest	Tree Cover Loss on Peat	Tree Cover Loss on Protected Area	Tree Cover Loss on Carbon Dense Area	Fire Activity
High	Low	Low	Medium	Medium high	High	Medium

The following mapping is used as an indicator to indicate the potential environmental risks of the assessed palm oil mill.



C. Social Impact Assessment

1. We also carried out social impact assessment during the mill assessment.
2. The mill representatives were made to understand the important pillars of good social responsibility practices, mandatory compliance of national labour laws & human rights, and the needs to improve social engagement with local community.

The findings of the social impact assessment are outlines in the following table:

Respect of Workers & Local Community Right	Yes
Compliance with Safety & Health	Yes
Compliance with National Labour Laws and Regulations	Yes
Compliance with Housing & Amenities Act 1990	Yes
Respect of FPIC	Yes
CSR/Community Contribution	Yes
Availability of grievance mechanism	No
Fair & Equitable Trading	Yes

Disclaimers:

The traceability to plantation assessment is carried out through observation, documentation reviews and interview based on Mewah's Sustainable Palm Oil Policy and Mewah's Supplier Assessment Guidelines. The above findings are collected through multiple sampling methodologies during the assessment date.

The information contained in this report may contain confidential, proprietary, privileged and/or private information. It is only intended for the users of Mewah Group Sustainability Dashboard.